

Plastic flights

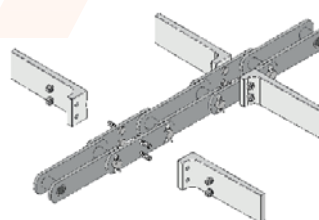
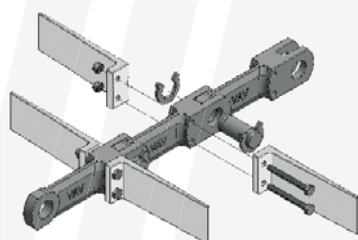
Bechtel plastic flights are made of flexible and durable nylon. Because the chain runs on the plastic flights, there is no steel on steel contact. This is energy-saving, noise-reducing and cost-saving. In addition, they are easy to (dis)assemble and wear/guiding rails become unnecessary. There are several types available: the standard Nylon, heat resistant Zytel, Fiberglass reinforced, FDA quality and a detectable version.



Characteristics of plastic scrapers

Type	Nylon	Glass reinforced	FDA-Quality	Zytel	Detectable
Colour	white	white	white	red	blue
Noise reducing	√√	√	√√	√√	√√
Flexible (will bend back)	√√		√√	√	√√
Detectable					√√
FDA Quality			√√		√√
°C - resistance	-20 / +70	-20 / +70	-20 / +70	+80 / +110	-20 / +70

√ = suitable, √√ = very suitable



Plastic scrapers (parameters in mm)

Length x height	Cc. distance of the fixing holes	Drop forged chain	Double drag link chain
		Pitch*	Plates*
117 x 45	20	102, 125, 160	35x5
137 x 45	20	102, 125, 160	35x5
180 x 45	20	102, 125, 160	35x5
162 x 55	25	-	45x6, 40x6
112 x 58	30	142, 150	50x6, 50x8
162 x 58	30	142, 150	50x6, 50x8
212 x 58	30	142, 150	50x6, 50x8
262 x 58	30	142, 150	50x6, 50x8
300 x 58	30	142, 150	50x6, 50x8

* Bechtel chain ex stock

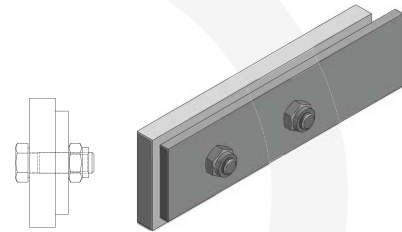


Plastic profiles

Plastic profiles can be produced in various types of materials, such as: PE (polyethylene), Nylon or PU (polyurethane). These can be used as a scraper or as a flight. The profiles can be custom-made. Below a number of examples.

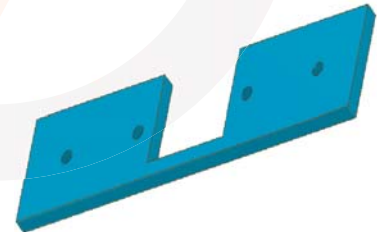
Profile A

Profile A - Plastic flight assembled on the steel scraper.



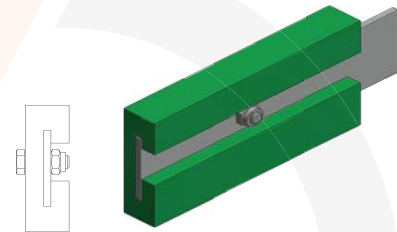
Profile Bridge

The "bridge" profile is assembled on the steel scrapers. The plastic runs under the chain and ensures less residue.



Profile C

Profile C - Plastic scraper which can be pushed over the steel scrapers



"Half moon" profile

The so-called "half-moon" profile is assembled on the steel scrapers.

