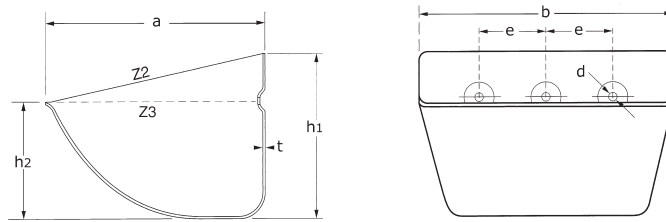




Claus Jumbo bucket

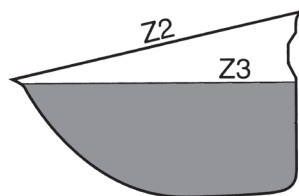
The Claus Jumbo was specifically designed for industrial purposes and lends itself particularly well to cement conveying. This heavy-duty pressed elevator bucket offers an ideal combination between price and strength.



Claus Jumbo elevator buckets (parameters in mm)

Type	Size/weight					Volume	Holes		Max.			
	b	a	h1	h2	t		Z2	Z3		no. bckts/m		
CJ330x250	340	260	190	130	3,0	4,50	9,60	7,20	11,0	80	3	5,00
CJ330x250	340	260	190	130	4,0	6,00	9,60	7,20	11,0	80	3	5,00
CJ370x250	380	260	190	130	3,0	5,10	10,80	8,30	11,0	80	4	5,00
CJ370x250	380	260	190	130	4,0	6,72	10,80	8,30	11,0	80	4	5,00
CJ470x250	480	260	190	130	3,0	6,50	14,00	10,50	11,0	80	5	5,00
CJ470x250	480	260	190	130	4,0	8,60	14,00	10,50	11,0	80	5	5,00

Z2 = gross volume in liters, Z3 = net volume in liters.



The following capacity table is based on the maximum number of buckets per meter and a net volume in liters of the elevator bucket, resulting in a certain capacity in M3 per hour.

Net capacity Claus Jumbo elevator buckets

Type	Belt speed in m/sec					Belt speed in m/sec				
	Z3	1,70	1,85	2,00	2,25	Z3 x 0,9	1,70	1,85	2,00	2,25
CJ 330x250	7,20	220,30	239,70	259,20	291,60	6,48	198,20	215,70	233,20	262,40
CJ 370x250	8,30	253,90	276,30	298,80	336,10	7,47	228,50	248,60	268,90	302,40
CJ 470x250	10,50	321,30	349,60	378,00	425,20	9,45	289,10	314,60	340,20	382,70